

**KUTLU
TRUCK**

CATALOGUE

**BRAKE
ADJUSTER**

AUTOMATIC BRAKE ADJUSTER

78750

MERCEDES



REFERENCE NO
80000

CASTING
55018

OEM NO
9424200238
9424200438
9454200238

SIDE	AXLE	MODEL
LEFT	2	ACTROS - AXOR

No. of Spline Teeth	L1	L2	L3	L4	L5	L6	L7	BUSHING (mm)	OFFSET	INCLINATION (deg)	SPLINE TYPE	CONTROL ARM
26	145							14	-56	15	N42x1.5x9H DIN 5480	Double Bent (short; R=65 mm)
26	145							14	56	15	N42x1.5x9H DIN 5480	Double Bent (short; R=65 mm)

78751

MERCEDES



REFERENCE NO
80001

CASTING
55017

OEM NO
9424200338
9424200538
9424290338
9454200338

SIDE	AXLE	MODEL
RIGHT	2	ACTROS - AXOR

78758

MERCEDES



REFERENCE NO
80008

CASTING
55016

OEM NO
9424200038
9424200938
9424201238
9454200038

SIDE	AXLE	MODEL
LEFT	1	ACTROS - AXOR

No. of Spline Teeth	L1	L2	L3	L4	L5	L6	L7	BUSHING (mm)	OFFSET	INCLINATION (deg)	SPLINE TYPE	CONTROL ARM
26	145							14	37	34	N42x1.5x9H DIN 5480	Double Bent (medium; R=78 mm)
26	145							14	-37	34	N42x1.5x9H DIN 5480	Double Bent (medium; R=78 mm)

78759

MERCEDES



REFERENCE NO
80009

CASTING
55015

OEM NO
9424200138
9424200838
9424201338
9454200138

SIDE	AXLE	MODEL
RIGHT	1	ACTROS - AXOR

78764

MERCEDES



REFERENCE NO
80014

CASTING
55031

OEM NO
9454200438

SIDE	AXLE	MODEL
RIGHT	2	ACTROS - AXOR

No. of Spline Teeth	L1	L2	L3	L4	L5	L6	L7	BUSHING (mm)	OFFSET	INCLINATION (deg)	SPLINE TYPE	CONTROL ARM
26	145							14	56	15	N42x1.5x9H DIN 5480	Double Bent (short; R=65 mm)
26	145							14	-56	15	N42x1.5x9H DIN 5480	Double Bent (short; R=65 mm)

78780

MERCEDES



REFERENCE NO
80030

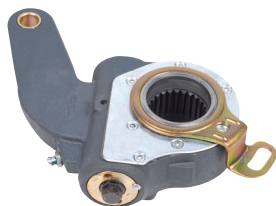
CASTING
55018

OEM NO
9454200938

SIDE	AXLE	MODEL
LEFT	2	ACTROS - AXOR

70809

MERCEDES



REFERENCE NO

72059

CASTING

53900

OEM NO

3574200538

SIDE	AXLE	MODEL
LEFT&RIGHT	1	0 303, 0 340 Turismo, 0 404, 0 405, 0 407, 0 408

No. of Spline Teeth	L1	L2	L3	L4	L5	L6	L7	BUSHING (mm)	OFFSET	INCLINATION (deg)	SPLINE TYPE	CONTROL ARM
26	145							14	0	37	N42x1.5x9H DIN 5480	Double Bent (short; R=65 mm)

71559

MERCEDES



REFERENCE NO

72809

CASTING

53163

OEM NO

3574201338

SIDE	AXLE	MODEL
LEFT	2, 3, 4	2426, 2426 B, 2632 S, 0 405, 0 345 CON-NECTO

No. of Spline Teeth	L1	L2	L3	L4	L5	L6	L7	BUSHING (mm)	OFFSET	INCLINATION (deg)	SPLINE TYPE	CONTROL ARM
26	130							14	-18	34	N42x1.5x9H DIN 5480	Double Bent (short; R=65 mm)
26	130							14	18	34	N42x1.5x9H DIN 5480	Double Bent (short; R=65 mm)

71560

MERCEDES



REFERENCE NO

72810

CASTING

53162

OEM NO

3574201438

SIDE	AXLE	MODEL
RIGHT	2, 3, 4	2426, 2426 B, 2632 S, 0 405, 0 345 CON-NECTO

71561

MERCEDES



REFERENCE NO

72811

CASTING

53163

OEM NO

3574201538

SIDE	AXLE	MODEL
LEFT	3	0 405, 0 345 CONECTO

No. of Spline Teeth	L1	L2	L3	L4	L5	L6	L7	BUSHING (mm)	OFFSET	INCLINATION (deg)	SPLINE TYPE	CONTROL ARM
26	130							14	-18	34	N42x1.5x9H DIN 5480	Double Bent (short; R=65 mm)
26	130							14	18	34	N42x1.5x9H DIN 5480	Double Bent (short; R=65 mm)

71562

MERCEDES



REFERENCE NO

72812

CASTING

53162

OEM NO

3574201638

SIDE	AXLE	MODEL
RIGHT	3	0 405, 0 345 CONECTO

AUTOMATIC BRAKE ADJUSTER

70963

MERCEDES



REFERENCE NO
72213

CASTING
54037

OEM NO
3014201138

SIDE	AXLE	MODEL
LEFT&RIGHT	2	O 303 / O 404, O 304 / O 340, OH 1416 / OH 1417, OH 1622, OH 1625, OH 1628

No. of Spline Teeth	L1	L2	L3	L4	L5	L6	L7	BUSHING (mm)	OFFSET	INCLINATION (deg)	SPLINE TYPE	CONTROL ARM
26	130							14	0	-29.5	N42x1.5x9H DIN 5480	Double Bent (medium; R=78 mm)

78760

MERCEDES



REFERENCE NO
80010

CASTING
55020

OEM NO
3834200538
9454200838
9464200838

SIDE	AXLE	MODEL
LEFT	2	LK/LN2 1520, 1520L, LK/LN2 1524, 1524L, MK Series, NG Series

No. of Spline Teeth	L1	L2	L3	L4	L5	L6	L7	BUSHING (mm)	OFFSET	INCLINATION (deg)	SPLINE TYPE	CONTROL ARM
26	145							14	-56	-5	N42x1.5x9H DIN 5480	Double Bent (short; R=65 mm)
26	145							14	56	-5	N42x1.5x9H DIN 5480	Double Bent (short; R=65 mm)

78761

MERCEDES



REFERENCE NO
80011

CASTING
55019

OEM NO
3834200438
9454200738
9474200738

SIDE	AXLE	MODEL
RIGHT	2	LK/LN2 1520, 1520L, LK/LN2 1524, 1524L, MK Series, NG Series

78762

MERCEDES



REFERENCE NO
80012

CASTING
55032

OEM NO
3854201738
9454200538
9484200538

SIDE	AXLE	MODEL
LEFT	1	ATEGO, ATEGO 2, MK Series, NG Series

No. of Spline Teeth	L1	L2	L3	L4	L5	L6	L7	BUSHING (mm)	OFFSET	INCLINATION (deg)	SPLINE TYPE	CONTROL ARM
26	145							14	-42	105	N42x1.5x9H DIN 5480	Double Bent (short; R=65 mm)
26	145							14	42	105	N42x1.5x9H DIN 5480	Double Bent (short; R=65 mm)

78763

MERCEDES



REFERENCE NO
80013

CASTING
55033

OEM NO
3854201838
9454200638
9494200638

SIDE	AXLE	MODEL
RIGHT	1	ATEGO, ATEGO 2, MK Series, NG Series

69456

MERCEDES



REFERENCE NO

70706

CASTING

53078

OEM NO

3054200238
3054202638

SIDE	AXLE	MODEL
LEFT&RIGHT	2	O 303 / O 330, O 362 / O 302, CITYLINER N116, JETLINER N 216, SKYLINER N122

No. of Spline Teeth	L1	L2	L3	L4	L5	L6	L7	BUSHING (mm)	OFFSET	INCLINATION (deg)	SPLINE TYPE	CONTROL ARM
26	115							14	0	-29	N42x1.5x9H DIN 5480	Double Bent (short; R=65 mm)

69525

MERCEDES



REFERENCE NO

70775

CASTING

53202

OEM NO

3074200338

SIDE	AXLE	MODEL
LEFT&RIGHT	1, 3	O 303 / O 330, O 362 / O 302, CITYLINER N116, JETLINER N 216, SKYLINER N122

No. of Spline Teeth	L1	L2	L3	L4	L5	L6	L7	BUSHING (mm)	OFFSET	INCLINATION (deg)	SPLINE TYPE	CONTROL ARM
26	130							14	0	120	N42x1.5x9H DIN 5480	Double Bent (short; R=65 mm)

70810

MERCEDES



REFERENCE NO

72060

CASTING

53860

OEM NO

3574200638

SIDE	AXLE	MODEL
RIGHT	2	O 370, O 371, O 373, O 374, O 400, O 500 TOURO

No. of Spline Teeth	L1	L2	L3	L4	L5	L6	L7	BUSHING (mm)	OFFSET	INCLINATION (deg)	SPLINE TYPE	CONTROL ARM
26	145							14	-15	-24	N42x1.5x9H DIN 5480	Double Bent (medium; R=78 mm)
26	145							14	15	-24	N42x1.5x9H DIN 5480	Double Bent (medium; R=78 mm)

70811

MERCEDES



REFERENCE NO

72061

CASTING

53861

OEM NO

3574200738

SIDE	AXLE	MODEL
LEFT	2	O 370, O 371, O 373, O 374, O 400, O 500 TOURO

AUTOMATIC BRAKE ADJUSTER

70923

MERCEDES



REFERENCE NO
72173

CASTING
53185

OEM NO
9424201138
6214200138

SIDE	AXLE	MODEL
LEFT	2	1625, 1827, 1831, 1834;1933, 1935, 1938, 2238, 2433, 2522, 2524, 2527, 2534, 2539, 2626 / 2628 UNIMOG

No. of Spline Teeth	L1	L2	L3	L4	L5	L6	L7	BUSHING (mm)	OFFSET	INCLINATION (deg)	SPLINE TYPE	CONTROL ARM
26	145							14	-56	4	N42x1.5x9H DIN 5480	Double Bent (short; R=65 mm)
26	145							14	56	4	N42x1.5x9H DIN 5480	Double Bent (short; R=65 mm)

70924

MERCEDES



REFERENCE NO
72174

CASTING
53186

OEM NO
9424201038
6214200038

SIDE	AXLE	MODEL
RIGHT	2	1625, 1827, 1831, 1834;1933, 1935, 1938, 2238, 2433, 2522, 2524, 2527, 2534, 2539, 2626 / 2628 UNIMOG

71346

MERCEDES



REFERENCE NO
72596

CASTING
53900

OEM NO
4731345
6524200238

SIDE	AXLE	MODEL
LEFT&RIGHT	2	1217, 1222, 1222, 1227, 1429, 1617, 1620, 1622, 2422, 1827, 1831, 1834, 2225

No. of Spline Teeth	L1	L2	L3	L4	L5	L6	L7	BUSHING (mm)	OFFSET	INCLINATION (deg)	SPLINE TYPE	CONTROL ARM
26	145							14	0	37	N42x1.5x9H DIN 5480	Double Bent (short; R=65 mm)

70953

MERCEDES



REFERENCE NO
72203

CASTING
53863

OEM NO
0501309398
11013281
4731246

SIDE	AXLE	MODEL
LEFT	1	STARLINER

No. of Spline Teeth	L1	L2	L3	L4	L5	L6	L7	BUSHING (mm)	OFFSET	INCLINATION (deg)	SPLINE TYPE	CONTROL ARM
19	145							14	-25	-30	A38x34 DIN 5482	Double Bent (short; R=65 mm)
19	145							14	25	-30	A38x34 DIN 5482	Double Bent (short; R=65 mm)

70954

MERCEDES



REFERENCE NO
72204

CASTING
53864

OEM NO
0501309399
4731253

SIDE	AXLE	MODEL
RIGHT	1	STARLINER

70788

MERCEDES



REFERENCE NO
72038

CASTING
54004

OEM NO
6234200738
6234200538

SIDE	AXLE	MODEL
RIGHT	2	1419, 1420, 1422, 1424, 1624, 1824, 1827, 2422, 2522, 2532

No. of Spline Teeth	L1	L2	L3	L4	L5	L6	L7	BUSHING (mm)	OFFSET	INCLINATION (deg)	SPLINE TYPE	CONTROL ARM
26	145							14	60	+34.5	N42x1.5x9H DIN 5480	Double Bent (short; R=65 mm)
26	145							14	-60	+34.5	N42x1.5x9H DIN 5480	Double Bent (short; R=65 mm)

70789

MERCEDES



REFERENCE NO
72039

CASTING
54005

OEM NO
6234200638
6234200438

SIDE	AXLE	MODEL
LEFT	2	1419, 1420, 1422, 1424, 1624, 1824, 1827, 2422, 2522, 2532

77936

MERCEDES



REFERENCE NO
79186

CASTING
54096

OEM NO
3844207438
3854207438

SIDE	AXLE	MODEL
LEFT&RIGHT		

No. of Spline Teeth	L1	L2	L3	L4	L5	L6	L7	BUSHING (mm)	OFFSET	INCLINATION (deg)	SPLINE TYPE	CONTROL ARM
26	145							14	0	180	N42x1.5x9H DIN 5480	double bent (medium; R=78mm)

70961

MERCEDES



REFERENCE NO
72211

CASTING
54035

OEM NO
14700 3574201138
4731261 KB2715

SIDE	AXLE	MODEL
LEFT		

No. of Spline Teeth	L1	L2	L3	L4	L5	L6	L7	BUSHING (mm)	OFFSET	INCLINATION (deg)	SPLINE TYPE	CONTROL ARM
26	130							14	-15	-14	N42x1.5x9H DIN 5480	Double bent (medium; R=78 mm)
26	130							14	15	-14	N42x1.5x9H DIN 5480	Double bent (medium; R=78 mm)

70962

MERCEDES



REFERENCE NO
72212

CASTING
54036

OEM NO
14699 3574201238
4731279 KB2720

SIDE	AXLE	MODEL
RIGHT		

AUTOMATIC BRAKE ADJUSTER

79399

MERCEDES



REFERENCE NO
80649

CASTING
55018

OEM NO
9604200438

SIDE	AXLE	MODEL
LEFT		AROCS

No. of Spline Teeth	L1	L2	L3	L4	L5	L6	L7	BUSHING (mm)	OFFSET	INCLINATION (deg)	SPLINE TYPE	CONTROL ARM
26	145							14	-56	15	N42x1.5x9H DIN 5480	Double bent (medium; R=69 mm)
26	145							14	56	15	N42x1.5x9H DIN 5480	Double bent (medium; R=69 mm)

79400

MERCEDES



REFERENCE NO
80650

CASTING
55031

OEM NO
9604200538

SIDE	AXLE	MODEL
RIGHT		AROCS

79401

MERCEDES



REFERENCE NO
80651

CASTING
55018

OEM NO
9604200238

SIDE	AXLE	MODEL
LEFT		AROCS

No. of Spline Teeth	L1	L2	L3	L4	L5	L6	L7	BUSHING (mm)	OFFSET	INCLINATION (deg)	SPLINE TYPE	CONTROL ARM
26	145							14	-56	15	N42x1.5x9H DIN 5480	Double bent (medium; R=69 mm)
26	145							14	56	15	N42x1.5x9H DIN 5480	Double bent (medium; R=69 mm)

79402

MERCEDES



REFERENCE NO
80652

CASTING
55017

OEM NO
9604200338

SIDE	AXLE	MODEL
RIGHT		AROCS

71167

MERCEDES



REFERENCE NO
80467

CASTING
55015

OEM NO
9604200138

SIDE	AXLE	MODEL
RIGHT		AROCS

No. of Spline Teeth	L1	L2	L3	L4	L5	L6	L7	BUSHING (mm)	OFFSET	INCLINATION (deg)	SPLINE TYPE	CONTROL ARM
26	145							14	-37	34	N42x1.5x9H DIN 5480	Double bent (medium; R=69 mm)
26	145							14	37	34	N42x1.5x9H DIN 5480	Double bent (medium; R=69 mm)

71168

MERCEDES



REFERENCE NO
80468

CASTING
55016

OEM NO
9604200038

SIDE	AXLE	MODEL
LEFT		AROCS

78930

MAN



REFERENCE NO
80180

CASTING
55020

OEM NO
81506106251
81506106261

SIDE	AXLE	MODEL
LEFT	2	TGA Series

No. of Spline Teeth	L1	L2	L3	L4	L5	L6	L7	BUSHING (mm)	OFFSET	INCLINATION (deg)	SPLINE TYPE	CONTROL ARM
26	145							14	-56	-5	N42x1.5x9H DIN 5480	Double Bent (short; R=65 mm)
26	145							14	56	-5	N42x1.5x9H DIN 5480	Double Bent (short; R=65 mm)

78931

MAN



REFERENCE NO
80181

CASTING
55019

OEM NO
81506106252
81506106262

SIDE	AXLE	MODEL
RIGHT	2	TGA Series

78926

MAN



REFERENCE NO
80176

CASTING
55018

OEM NO
81506106253
81506106263

SIDE	AXLE	MODEL
LEFT	2	TGA Series

No. of Spline Teeth	L1	L2	L3	L4	L5	L6	L7	BUSHING (mm)	OFFSET	INCLINATION (deg)	SPLINE TYPE	CONTROL ARM
26	145							14	-56	15	N42x1.5x12H DIN 5480	Double Bent (short; R=65 mm)
26	145							14	56	15	N42x1.5x12H DIN 5480	Double Bent (short; R=65 mm)

78927

MAN



REFERENCE NO
80177

CASTING
55017

OEM NO
81506106256
81506106264

SIDE	AXLE	MODEL
RIGHT	2	TGA Series

78926

MAN



REFERENCE NO
80176

CASTING
55018

OEM NO
81506106253
81506106263

SIDE	AXLE	MODEL
LEFT	2	TGA Series

No. of Spline Teeth	L1	L2	L3	L4	L5	L6	L7	BUSHING (mm)	OFFSET	INCLINATION (deg)	SPLINE TYPE	CONTROL ARM
26	145							14	-56	15	N42x1.5x12H DIN 5480	Double Bent (short; R=65 mm)
26	145							14	56	15	N42x1.5x12H DIN 5480	Double Bent (short; R=65 mm)

78933

MAN



REFERENCE NO
80183

CASTING
55031

OEM NO
81506106258
81506106266

SIDE	AXLE	MODEL
RIGHT	2	TGA Series

AUTOMATIC BRAKE ADJUSTER

78928

MAN



REFERENCE NO
80178

CASTING
55016

OEM NO
81506106255
81506106259

SIDE	AXLE	MODEL
LEFT	1	TGA Series

No. of Spline Teeth	L1	L2	L3	L4	L5	L6	L7	BUSHING (mm)	OFFSET
26	145							14	37
26	145							14	-37

78929

MAN



REFERENCE NO
80179

CASTING
55015

OEM NO
81506106254
81506106260

SIDE	AXLE	MODEL
RIGHT	1	TGA Series

INCLINATION (deg)	SPLINE TYPE	CONTROL ARM
34	N42x1.5x12H DIN 5480	Double Bent (medium; R=78 mm)
34	N42x1.5x12H DIN 5480	Double Bent (medium; R=78 mm)

77958

MAN



REFERENCE NO
79208

CASTING
53185

OEM NO
81506106211
81506106235
81506106165

SIDE	AXLE	MODEL
LEFT	2	F 2000 Series, F 90 Series, M 2000 Series, TGA Series

No. of Spline Teeth	L1	L2	L3	L4	L5	L6	L7	BUSHING (mm)	OFFSET
26	145							14	-56
26	145							14	56

77959

MAN



REFERENCE NO
79209

CASTING
53186

OEM NO
81506106210
81506106234
81506106166

SIDE	AXLE	MODEL
RIGHT	2	F 2000 Series, F 90 Series, M 2000 Series, TGA Series

INCLINATION (deg)	SPLINE TYPE	CONTROL ARM
4	N42x1.5x12H DIN 5480	Double Bent (short; R=65 mm)
4	N42x1.5x9H DIN 5480	Double Bent (short; R=65 mm)

77960

MAN



REFERENCE NO
79210

CASTING
53162

OEM NO
81506106153
81506106213
81506106083

SIDE	AXLE	MODEL
LEFT	1	F 2000 Series, F 90 Series, L 2000 Series, M 2000 Series, M 90 Series, TGA Series

No. of Spline Teeth	L1	L2	L3	L4	L5	L6	L7	BUSHING (mm)	OFFSET
26	145							14	18
26	145							14	-18

77961

MAN



REFERENCE NO
79211

CASTING
53163

OEM NO
81506106154
81506106212
81506106084

SIDE	AXLE	MODEL
RIGHT	1	F 2000 Series, F 90 Series, L 2000 Series, M 2000 Series, M 90 Series, TGA Series

INCLINATION (deg)	SPLINE TYPE	CONTROL ARM
34	N42x1.5x9H DIN 5480	Double Bent (medium; R=78 mm)
34	N42x1.5x9H DIN 5480	Double Bent (medium; R=78 mm)

77962

MAN



REFERENCE NO
79212

CASTING
53177

OEM NO
81506108151
81506109151
81506106081
81506106151
81506106231

SIDE	AXLE	MODEL
LEFT&RIGHT	1	F 2000 Series, F 90 Series, M 2000 Series, M 90 Series

No. of Spline Teeth	L1	L2	L3	L4	L5	L6	L7	BUSHING (mm)	OFFSET	INCLINATION (deg)	SPLINE TYPE	CONTROL ARM
26	145							14	0	+132.5	N42x1.5x9H DIN 5480	Double Bent (medium; R=78 mm)

77973

MAN



REFERENCE NO
79223

CASTING
53070

OEM NO
81506106128
81506106188
81506106220
81506106078

SIDE	AXLE	MODEL
LEFT	2, 3, 4	16.232 TRUCK, 3 AXLE RIGID, 4 AXLE RIGID, 26.280

No. of Spline Teeth	L1	L2	L3	L4	L5	L6	L7	BUSHING (mm)	OFFSET	INCLINATION (deg)	SPLINE TYPE	CONTROL ARM
26	215							14	-45	10	N42x1.5x9H DIN 5480	Double Bent (short; R=65 mm)
26	215							14	45	10	N42x1.5x9H DIN 5480	Double Bent (short; R=65 mm)

77974

MAN



REFERENCE NO
79224

CASTING
53071

OEM NO
81506106129
81506106187
81506106221
81506106077

SIDE	AXLE	MODEL
RIGHT	2, 3, 4	16.232 TRUCK, 3 AXLE RIGID, 4 AXLE RIGID, 26.280

77955

MAN



REFERENCE NO
79205

CASTING
53878

OEM NO
81506106176
81506106214
8150610018176
81506106140

SIDE	AXLE	MODEL
RIGHT	2	F 2000 Series, F 90 Series, M 2000 Series, M 90 Series, TGA Series

No. of Spline Teeth	L1	L2	L3	L4	L5	L6	L7	BUSHING (mm)	OFFSET	INCLINATION (deg)	SPLINE TYPE	CONTROL ARM
26	145							14	56	15	N42x1.5x9H DIN 5480	Double Bent (short; R=65 mm)
26	145							14	-56	15	N42x1.5x9H DIN 5480	Double Bent (short; R=65 mm)

77956

MAN



REFERENCE NO
79206

CASTING
53879

OEM NO
81506106177
81506106215
810661019177
81506106139

SIDE	AXLE	MODEL
LEFT	2	F 2000 Series, F 90 Series, M 2000 Series, M 90 Series, TGA Series

AUTOMATIC BRAKE ADJUSTER

77975

MAN



REFERENCE NO
79225

CASTING
53522

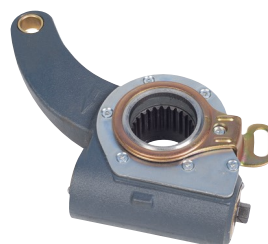
OEM NO
815061034170
81506106126
81506106170
81506106222

SIDE	AXLE	MODEL
RIGHT	1	

No. of Spline Teeth	L1	L2	L3	L4	L5	L6	L7	BUSHING (mm)	OFFSET
26	130							14	-15
26	130							14	15

77976

MAN



REFERENCE NO
79226

CASTING
53523

OEM NO
815061035169
81506106127
81506106169
81506106223

SIDE	AXLE	MODEL
LEFT	1	

INCLINATION (deg)	SPLINE TYPE	CONTROL ARM
120	N42x1.5x9H DIN 5480	Double Bent (short; R=65 mm)
120	N42x1.5x9H DIN 5480	Double Bent (short; R=65 mm)

77969

MAN



REFERENCE NO
79219

CASTING
53163

OEM NO
815061024182
81506106182
81506106204

SIDE	AXLE	MODEL
RIGHT	2	

No. of Spline Teeth	L1	L2	L3	L4	L5	L6	L7	BUSHING (mm)	OFFSET
26	130							14	-18
26	130							14	18

77970

MAN



REFERENCE NO
79220

CASTING
53162

OEM NO
815061025181
81506106181
81506106203

SIDE	AXLE	MODEL
LEFT	2	

INCLINATION (deg)	SPLINE TYPE	CONTROL ARM
34	N42x1.5x9H DIN 5480	Double Bent (short; R=65 mm)
34	N42x1.5x9H DIN 5480	Double Bent (short; R=65 mm)

77965

MAN



REFERENCE NO
79215

CASTING
53226

OEM NO
81506106209
815061014167
815061015167
81506106098
81506106167

SIDE	AXLE	MODEL
LEFT&RIGHT	2	BUS

No. of Spline Teeth	L1	L2	L3	L4	L5	L6	L7	BUSHING (mm)	OFFSET	INCLINATION (deg)	SPLINE TYPE	CONTROL ARM
26	130							14	0	-38	N42x1.5x9H DIN 5480	Double Bent (short; R=65 mm)

77966

MAN



REFERENCE NO
79216

CASTING
54028

OEM NO
81506106178
81506106206
81056106150
81056106206
815061020178
81506106150

77967

MAN



REFERENCE NO
79217

CASTING
54027

OEM NO
815061021179
81506106149
81506106179
81506106205

SIDE	AXLE	MODEL
LEFT	2	

SIDE	AXLE	MODEL
RIGHT	2	

No. of Spline Teeth	L1	L2	L3	L4	L5	L6	L7	BUSHING (mm)	OFFSET	INCLINATION (deg)	SPLINE TYPE	CONTROL ARM
26	130							14	-40	28	N42x1.5x9H DIN 5480	Double Bent (short; R=65 mm)
26	130							14	40	28	N42x1.5x9H DIN 5480	Double Bent (short; R=65 mm)

71410

SCANIA



REFERENCE NO
72660

CASTING
53662

OEM NO
1112833

SIDE		AXLE							MODEL		
LEFT		2, 3, 4							F82, K113, K93CLB, L113, L94, K113CL, K113TL, G82, G112, P112, R112, R142, T142, P82, G92, P92, R92, P113MA, G93, P93, R93, P113, R113, R143, T93, T113, T143, N113 4 Series/ 94, 114, 124,144, T,94, T114, T124		
No. of Spline Teeth	L1	L2	L3	L4	L5	L6	L7	BUSHING (mm)	OFFSET		
10	165							16	25		
10	165							16	-25		

71411

SCANIA



REFERENCE NO
72661

CASTING
53663

OEM NO
1112834

SIDE		AXLE							MODEL			
RIGHT		2, 3, 4							F82, K113, K93CLB, L113, L94, K113CL, K113TL, G82, G112, P112, R112, R142, T142, P82, G92, P92, R92, P113MA, G93, P93, R93, P113, R113, R143, T93, T113, T143, N113, 4 Series/ 94, 114, 124,144, T,94, T114, T124			
No. of Spline Teeth	L1	L2	L3	L4	L5	L6	L7	BUSHING (mm)	OFFSET	INCLINATION (deg)	SPLINE TYPE	CONTROL ARM
10	165							16	25	-42	SAE 11/2" 10 C	Double Bent (long; R=100 mm)
10	165							16	-25	-42	SAE 11/2" 10 C	Double Bent (long; R=100 mm)

78192

SCANIA



REFERENCE NO
79442

CASTING
54083

OEM NO
1358634

SIDE		AXLE							MODEL		
RIGHT		1							L 94, 4 Series/ 94, 114, 124,144, 4 Series/ T94, T114, T124		
No. of Spline Teeth	L1	L2	L3	L4	L5	L6	L7	BUSHING (mm)	OFFSET		
10	165							16	-65		
10	165							16	65		

78193

SCANIA



REFERENCE NO
79443

CASTING
54084

OEM NO
1358635

SIDE		AXLE							MODEL			
LEFT		1							L 94, 4 Series/ 94, 114, 124,144, 4 Series/ T94, T114, T124			
No. of Spline Teeth	L1	L2	L3	L4	L5	L6	L7	BUSHING (mm)	OFFSET	INCLINATION (deg)	SPLINE TYPE	CONTROL ARM
10	165							16	-65	0	SAE 11/2" 10 C	Double Bent (short; R=65 mm)
10	165							16	65	0	SAE 11/2" 10 C	Double Bent (short; R=65 mm)

71413

SCANIA



REFERENCE NO
72663

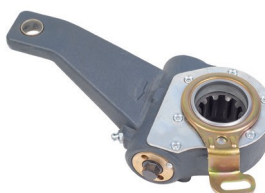
CASTING
53705

OEM NO
1112829

SIDE		AXLE							MODEL		
LEFT		1							BR112, DR113, F82, K112, K82, N113, F113, 2 Series all models, 3 Series all models		
No. of Spline Teeth	L1	L2	L3	L4	L5	L6	L7	BUSHING (mm)	OFFSET		
10	165							16	50		
10	165							16	-50		

71414

SCANIA



REFERENCE NO
72664

CASTING
53704

OEM NO
276526 276576
1112830

SIDE		AXLE							MODEL			
RIGHT		1							BR112, DR113, F82, K112, K82, N113, F113, 2 Series all models, 3 Series all models			
No. of Spline Teeth	L1	L2	L3	L4	L5	L6	L7	BUSHING (mm)	OFFSET	INCLINATION (deg)	SPLINE TYPE	CONTROL ARM
10	165							16	50	0	SAE 11/2" 10 C	Double Bent (short; R=65 mm)
10	165							16	-50	0	SAE 11/2" 10 C	Double Bent (short; R=65 mm)

AUTOMATIC BRAKE ADJUSTER

71412

SCANIA



REFERENCE NO
72662

CASTING
53226

OEM NO
1112831

SIDE	AXLE	MODEL
LEFT&RIGHT	2, 3	F113, S113, 1 Series LT, LBT Model, LT146, P92M, T112, T142, T82, T92, T93, T113, T143, G112, P112, R112, R142, G82, P82, G92, P92, R92, G93, P93, R93, P113, R113, R143, 4 Series/ 94, 114, 124, 144, 4 Series/ T114, T124

No. of Spline Teeth	L1	L2	L3	L4	L5	L6	L7	BUSHING (mm)	OFFSET	INCLINATION (deg)	SPLINE TYPE	CONTROL ARM
10	165							16	0	-38	SAE 1 1/2" 10 C	Double Bent (long; R=100 mm)

71479

SCANIA



REFERENCE NO
72729

CASTING
53884

OEM NO
14561 383826

SIDE	AXLE	MODEL
RIGHT LEFT LEFT	3	G112 / P112 / R112 / R142, G93 / P93 / R93, P113 / R113 / R143

No. of Spline Teeth	L1	L2	L3	L4	L5	L6	L7	BUSHING (mm)	OFFSET	INCLINATION (deg)	SPLINE TYPE	CONTROL ARM
10	165							16	25	40	SAE 1 1/2" 10 C	Double Bent (short; R=65 mm)
10	165							16	-25	40	SAE 1 1/2" 10 C	Double Bent (short; R=65 mm)

71480

SCANIA



REFERENCE NO
72730

CASTING
53883

OEM NO
14562 383825

SIDE	AXLE	MODEL
LEFT RIGHT RIGHT	3	G112 / P112 / R112 / R142 G93 / P93 / R93 P113 / R113 / R143

78097

SCANIA



REFERENCE NO
79347

CASTING
54021

OEM NO
1112837 337389
394187

SIDE	AXLE	MODEL
RIGHT LEFT LEFT		

No. of Spline Teeth	L1	L2	L3	L4	L5	L6	L7	BUSHING (mm)	OFFSET	INCLINATION (deg)	SPLINE TYPE	CONTROL ARM
10	165							16	-65	0	SAE 1 1/2" 10 C	Double Bent (short; R=65 mm)
10	165							16	65	0	SAE 1 1/2" 10 C	Double Bent (short; R=65 mm)

78098

SCANIA



REFERENCE NO
79348

CASTING
54020

OEM NO
1112838 337390
394188

SIDE	AXLE	MODEL
LEFT RIGHT RIGHT		

78300

SCANIA



REFERENCE NO
79550

CASTING
54083

OEM NO
1356696

78301

SCANIA



REFERENCE NO
79551

CASTING
54084

OEM NO
1356695

SIDE	AXLE	MODEL
LEFT		

SIDE	AXLE	MODEL
RIGHT		

No. of Spline Teeth	L1	L2	L3	L4	L5	L6	L7	BUSHING (mm)	OFFSET	INCLINATION (deg)	SPLINE TYPE	CONTROL ARM
10	165							16	-65	0	SAE 1 1/2" 10 C	Double Bent (short; R=65 mm)
10	165							16	65	0	SAE 1 1/2" 10 C	Double Bent (short; R=65 mm)

71532

VOLVO



REFERENCE NO
72782

CASTING
53861

OEM NO
1195461

SIDE	AXLE	MODEL
LEFT	2	B10M MARK II & III, C10M

No. of Spline Teeth	L1	L2	L3	L4	L5	L6	L7	BUSHING (mm)	OFFSET
10	145							12,70	15
10	145							12,70	-15

71533

VOLVO



REFERENCE NO
72783

CASTING
53860

OEM NO
1195462

SIDE	AXLE	MODEL
RIGHT	2	B10M MARK II & III, C10M

INCLINATION (deg)	SPLINE TYPE	CONTROL ARM
-24	SAE 11/2" 10 C	Bent
-24	SAE 11/2" 10 C	Bent

71534

VOLVO



REFERENCE NO
72784

CASTING
54039

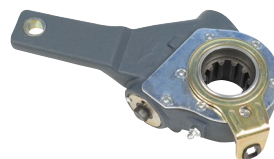
OEM NO
1197965

SIDE	AXLE	MODEL
LEFT	2	B10M MARK IV

No. of Spline Teeth	L1	L2	L3	L4	L5	L6	L7	BUSHING (mm)	OFFSET
10	165							12,70	15
10	165							12,70	-15

71535

VOLVO



REFERENCE NO
72785

CASTING
54038

OEM NO
1197966

SIDE	AXLE	MODEL
RIGHT	2	B10M MARK IV

INCLINATION (deg)	SPLINE TYPE	CONTROL ARM
-24	SAE 11/2" 10 C	Bent
-24	SAE 11/2" 10 C	Bent

71473

VOLVO



REFERENCE NO
72723

CASTING
53861

OEM NO
1136432

SIDE	AXLE	MODEL
LEFT	2, 3	B10M MARK I, B9M

No. of Spline Teeth	L1	L2	L3	L4	L5	L6	L7	BUSHING (mm)	OFFSET
10	165							12,70	15
10	165							12,70	-15

71474

VOLVO



REFERENCE NO
72724

CASTING
53860

OEM NO
1136433

SIDE	AXLE	MODEL
RIGHT	2, 3	B10M MARK I, B9M

INCLINATION (deg)	SPLINE TYPE	CONTROL ARM
-24	SAE 11/2" 10 C	Bent
-24	SAE 11/2" 10 C	Bent

AUTOMATIC BRAKE ADJUSTER

71428

VOLVO



REFERENCE NO
72678

CASTING
54104

OEM NO
1196321

SIDE	AXLE	MODEL
LEFT&RIGHT	1, 2, 3	B10M MARK III & IV

No. of Spline Teeth	L1	L2	L3	L4	L5	L6	L7	BUSHING (mm)	OFFSET	INCLINATION (deg)	SPLINE TYPE	CONTROL ARM
10	140							12,70	0	0	SAE 1 1/2" 10 C	Double Bent (long; R=100 mm)

78427

VOLVO



REFERENCE NO
79677

CASTING
53704

OEM NO
3193400 9524585

SIDE	AXLE	MODEL
LEFT	2	B7L

No. of Spline Teeth	L1	L2	L3	L4	L5	L6	L7	BUSHING (mm)	OFFSET	INCLINATION (deg)	SPLINE TYPE	CONTROL ARM
10	165							12,70	-50	0	SAE 1 1/2" 10 C	Double Bent (long; R=100 mm)
10	165							12,70	50	0	SAE 1 1/2" 10 C	Double Bent (long; R=100 mm)

78428

VOLVO



REFERENCE NO
79678

CASTING
53705

OEM NO
3193401 9524586

SIDE	AXLE	MODEL
RIGHT	2	B7L

No. of Spline Teeth	L1	L2	L3	L4	L5	L6	L7	BUSHING (mm)	OFFSET	INCLINATION (deg)	SPLINE TYPE	CONTROL ARM
10	165							12,70	-50	0	SAE 1 1/2" 10 C	Double Bent (long; R=100 mm)
10	165							12,70	50	0	SAE 1 1/2" 10 C	Double Bent (long; R=100 mm)

78054

RENAULT

**REFERENCE NO**
79304**CASTING**
54094**OEM NO**
5010260027

SIDE	AXLE	MODEL
LEFT	2, 3	AE, MAGNUM, PREMIUM

No. of Spline Teeth	L1	L2	L3	L4	L5	L6	L7	BUSHING (mm)	OFFSET	INCLINATION (deg)	SPLINE TYPE	CONTROL ARM
28	160							14	-38	0	SAE 1 1/2" 28 C	Double Bent (short; R=65 mm)
28	160							14	38	0	SAE 1 1/2" 28 C	Double Bent (short; R=65 mm)

78055

RENAULT

**REFERENCE NO**
79305**CASTING**
54095**OEM NO**
5010260028

SIDE	AXLE	MODEL
RIGHT	2, 3	AE, MAGNUM, PREMIUM

78044

RENAULT

**REFERENCE NO**
79294**CASTING**
53717**OEM NO**
5010098860

SIDE	AXLE	MODEL
LEFT	1, 2, 3, 4	MAXTER, KERAX

No. of Spline Teeth	L1	L2	L3	L4	L5	L6	L7	BUSHING (mm)	OFFSET	INCLINATION (deg)	SPLINE TYPE	CONTROL ARM
27	160							14	-56,2	25	BNA 227 D3.5	Double Bent (short; R=65 mm)
27	160							14	56,2	25	BNA 227 D3.5	Double Bent (short; R=65 mm)

78045

RENAULT

**REFERENCE NO**
79295**CASTING**
53718**OEM NO**
5010098861

SIDE	AXLE	MODEL
RIGHT	1, 2, 3, 4	MAXTER, KERAX

78060

RENAULT

**REFERENCE NO**
79310**CASTING**
53717**OEM NO**
5010260117

SIDE	AXLE	MODEL
LEFT	1, 2	MAXTER, PREMIUM, KERAX

No. of Spline Teeth	L1	L2	L3	L4	L5	L6	L7	BUSHING (mm)	OFFSET	INCLINATION (deg)	SPLINE TYPE	CONTROL ARM
27	160							14	-56,2	25	BNA 227 D3.5	Double Bent (short; R=65 mm)
27	160							14	56,2	25	BNA 227 D3.5	Double Bent (short; R=65 mm)

78061

RENAULT

**REFERENCE NO**
79311**CASTING**
53718**OEM NO**
5010260118

SIDE	AXLE	MODEL
RIGHT	1, 2	MAXTER, PREMIUM, KERAX

AUTOMATIC BRAKE ADJUSTER

78046

RENAULT



REFERENCE NO
79296

CASTING
53717

OEM NO
5010098862

SIDE	AXLE	MODEL
LEFT	2, 3, 4	MAXTER, PREMIUM, MAGNUM

No. of Spline Teeth	L1	L2	L3	L4	L5	L6	L7	BUSHING (mm)	OFFSET
27	160							14	-56,2
27	160							14	56,2

78047

RENAULT



REFERENCE NO
79297

CASTING
53718

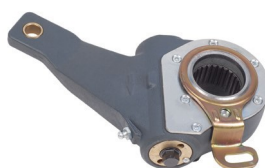
OEM NO
5010098863

SIDE	AXLE	MODEL
RIGHT	2, 3, 4	MAXTER, PREMIUM, MAGNUM

INCLINATION (deg)	SPLINE TYPE	CONTROL ARM
25	BNA 227 D3.5	Double Bent (short; R=65 mm)
25	BNA 227 D3.5	Double Bent (short; R=65 mm)

77763

RENAULT



REFERENCE NO
79013

CASTING
54008

OEM NO
5000789892
5010056685

SIDE	AXLE	MODEL
RIGHT	2, 3	G170, G210, G230, G260, G290, G310, G340TI, G385TI, R310, R330, R370, R390, R360

No. of Spline Teeth	L1	L2	L3	L4	L5	L6	L7	BUSHING (mm)	OFFSET
27	175							14	38
27	175							14	-38

77764

RENAULT



REFERENCE NO
79014

CASTING
54009

OEM NO
5000789893
5010056686

SIDE	AXLE	MODEL
LEFT	2, 3	G170, G210, G230, G260, G290, G310, G340TI, G385TI, R310, R330, R370, R390, R360

INCLINATION (deg)	SPLINE TYPE	CONTROL ARM
30	BNA 227 D3.5	Double Bent (short; R=65 mm)
30	BNA 227 D3.5	Double Bent (short; R=65 mm)

78058

RENAULT



REFERENCE NO
79308

CASTING
53717

OEM NO
5010260115

SIDE	AXLE	MODEL
LEFT	1	MAXTER, PREMIUM

No. of Spline Teeth	L1	L2	L3	L4	L5	L6	L7	BUSHING (mm)	OFFSET
27	175							14	-56,2
27	175							14	56,2

78059

RENAULT



REFERENCE NO
79309

CASTING
53718

OEM NO
5010260116

SIDE	AXLE	MODEL
RIGHT	1	MAXTER, PREMIUM

INCLINATION (deg)	SPLINE TYPE	CONTROL ARM
25	BNA 227 D3.5	Double Bent (short; R=65 mm)
25	BNA 227 D3.5	Double Bent (short; R=65 mm)

78049

RENAULT



REFERENCE NO
79299

CASTING
52760

OEM NO
5010216843

SIDE	AXLE	MODEL
LEFT	2, 3, 4	MAXTER

No. of Spline Teeth	L1	L2	L3	L4	L5	L6	L7	BUSHING (mm)	OFFSET	INCLINATION (deg)	SPLINE TYPE	CONTROL ARM
27	160							14	-38	0	BNA 227 D3.5	Double Bent (short; R=65 mm)
27	160							14	38	0	BNA 227 D3.5	Double Bent (short; R=65 mm)

78050

RENAULT



REFERENCE NO
79300

CASTING
52761

OEM NO
5010216844

SIDE	AXLE	MODEL
RIGHT	2, 3, 4	MAXTER

78038

RENAULT



REFERENCE NO
79288

CASTING
54095

OEM NO
5010098831

SIDE	AXLE	MODEL
RIGHT	2	AE

No. of Spline Teeth	L1	L2	L3	L4	L5	L6	L7	BUSHING (mm)	OFFSET	INCLINATION (deg)	SPLINE TYPE	CONTROL ARM
28	160							14	38	0	SAE 1 1/2" 28 C	Double Bent (short; R=65 mm)
28	160							14	-38	0	SAE 1 1/2" 28 C	Double Bent (short; R=65 mm)

78039

RENAULT



REFERENCE NO
79289

CASTING
54094

OEM NO
5010098832

SIDE	AXLE	MODEL
LEFT	2	AE

AUTOMATIC BRAKE ADJUSTER

71288

DAF



REFERENCE NO
72538

CASTING
54042

OEM NO
0159589 105015001

71289

DAF



REFERENCE NO
72539

CASTING
54043

OEM NO
0159590 105016001

SIDE	AXLE	MODEL
LEFT	2	85, 95

SIDE	AXLE	MODEL
RIGHT	2	85, 95

No. of Spline Teeth	L1	L2	L3	L4	L5	L6	L7	BUSHING (mm)	OFFSET	INCLINATION (deg)	SPLINE TYPE	CONTROL ARM
10	165							14	-45	-30	SAE 11/2" 10 C	Double Bent (short; R=65 mm)
10	165							14	45	-30	SAE 11/2" 10 C	Double Bent (short; R=65 mm)

71273

DAF



REFERENCE NO
72523

CASTING
52760

OEM NO
0159556 105007001

71274

DAF



REFERENCE NO
72524

CASTING
52761

OEM NO
0159557 105006001

SIDE	AXLE	MODEL
RIGHT LEFT LEFT LEFT LEFT RIGHT	1, 2	55, 75, 85, 95, 95FT, SPECTRA, FA2100 / 2500, FA2800 / 3300 / 3600, FAS2500, FT2100 / 2500, FT2800 / 3300 / 3600, FTS2800 / 3300 / 3600, FTT2800 / 3600, 95FTG

SIDE	AXLE	MODEL
LEFT RIGHT RIGHT RIGHT RIGHT LEFT	1, 2	55, 75, 85, 95, 95FT, SPECTRA, FA2100 / 2500, FA2800 / 3300 / 3600, FAS2500, FT2100 / 2500, FT2800 / 3300 / 3600, FTS2800 / 3300 / 3600, FTT2800 / 3600, 95FTG

No. of Spline Teeth	L1	L2	L3	L4	L5	L6	L7	BUSHING (mm)	OFFSET	INCLINATION (deg)	SPLINE TYPE	CONTROL ARM
10	140							14	-38	0	SAE 11/2" 10 C	Double Bent (medium; R=78 mm)
10	140							14	38	0	SAE 11/2" 10 C	Double Bent (medium; R=78 mm)

71294

DAF



REFERENCE NO
72544

CASTING
53185

OEM NO
159563

71295

DAF



REFERENCE NO
72545

CASTING
53186

OEM NO
159564

SIDE	AXLE	MODEL
LEFT	2, 3	95

SIDE	AXLE	MODEL
RIGHT	2, 3	95

No. of Spline Teeth	L1	L2	L3	L4	L5	L6	L7	BUSHING (mm)	OFFSET	INCLINATION (deg)	SPLINE TYPE	CONTROL ARM
10	143							14	-56	4	SAE 11/2" 10 C	Double Bent (short; R=65 mm)
10	143							14	56	4	SAE 11/2" 10 C	Double Bent (short; R=65 mm)

All manufacturer names, trademarks, product descriptions contained in this product catalog are for reference only. All reference numbers are for comparison purposes.

71292

DAF



REFERENCE NO
72542

CASTING
52987

OEM NO
159561

71293

DAF



REFERENCE NO
72543

CASTING
52985

OEM NO
159562

SIDE	AXLE	MODEL
RIGHT LEFT LEFT	2, 3	75, 85, 95

No. of Spline Teeth	L1	L2	L3	L4	L5	L6	L7	BUSHING (mm)	OFFSET
10	165							14	38
10	165							14	-38

SIDE	AXLE	MODEL
LEFT RIGHT RIGHT	2, 3	75, 85, 95

INCLINATION (deg)	SPLINE TYPE	CONTROL ARM
-34	SAE 11/2" 10 C	Double Bent (short; R=65 mm)
-34	SAE 11/2" 10 C	Double Bent (short; R=65 mm)

71454

DAF



REFERENCE NO
72704

CASTING
54077

OEM NO
755616

71455

DAF



REFERENCE NO
72705

CASTING
54078

OEM NO
755617

SIDE	AXLE	MODEL
LEFT	3, 4	85, 95

No. of Spline Teeth	L1	L2	L3	L4	L5	L6	L7	BUSHING (mm)	OFFSET
10	145							14	60
10	145							14	-60

SIDE	AXLE	MODEL
RIGHT	3, 4	85, 95

INCLINATION (deg)	SPLINE TYPE	CONTROL ARM
-10	SAE 11/2" 10 C	Double Bent (medium; R=78 mm)
-10	SAE 11/2" 10 C	Double Bent (medium; R=78 mm)

71636

DAF



REFERENCE NO
72886

CASTING
54077

OEM NO
1263485

71637

DAF



REFERENCE NO
72887

CASTING
54078

OEM NO
1263486

SIDE	AXLE	MODEL
LEFT		

No. of Spline Teeth	L1	L2	L3	L4	L5	L6	L7	BUSHING (mm)	OFFSET
10	145							14	60
10	145							14	-60

SIDE	AXLE	MODEL
RIGHT		

INCLINATION (deg)	SPLINE TYPE	CONTROL ARM
-10	SAE 11/2" 10 C	Double Bent (medium; R=78 mm)
-10	SAE 11/2" 10 C	Double Bent (medium; R=78 mm)

AUTOMATIC BRAKE ADJUSTER

78008

KAMAZ



REFERENCE NO
79258

CASTING
52760

OEM NO

SIDE	AXLE	MODEL
LEFT		

No. of Spline Teeth	L1	L2	L3	L4	L5	L6	L7	BUSHING (mm)	OFFSET
10	165							14	-38
10	165							14	38

78009

KAMAZ



REFERENCE NO
79259

CASTING
52761

OEM NO

SIDE	AXLE	MODEL
RIGHT		

INCLINATION (deg)	SPLINE TYPE	CONTROL ARM
0	SAE 11/2" 10 C	Double Bent (short; R=65 mm)
0	SAE 11/2" 10 C	Double Bent (short; R=65 mm)

78789

KAMAZ



REFERENCE NO
80039

CASTING
55016

OEM NO

SIDE	AXLE	MODEL
LEFT		

No. of Spline Teeth	L1	L2	L3	L4	L5	L6	L7	BUSHING (mm)	OFFSET
10	145							14	37
10	145							14	-37

78790

KAMAZ



REFERENCE NO
80040

CASTING
55015

OEM NO

SIDE	AXLE	MODEL
RIGHT		

INCLINATION (deg)	SPLINE TYPE	CONTROL ARM
34	SAE 11/2" 10 C	Double Bent (short; R=65 mm)
34	SAE 11/2" 10 C	Double Bent (short; R=65 mm)

78010

KAMAZ



REFERENCE NO
79260

CASTING
54077

OEM NO

SIDE	AXLE	MODEL
LEFT		

No. of Spline Teeth	L1	L2	L3	L4	L5	L6	L7	BUSHING (mm)	OFFSET
10	165							14	60
10	165							14	-60

78011

KAMAZ



REFERENCE NO
79261

CASTING
54078

OEM NO

SIDE	AXLE	MODEL
RIGHT		

INCLINATION (deg)	SPLINE TYPE	CONTROL ARM
-10	SAE 11/2" 10 C	Double Bent (short; R=65 mm)
-10	SAE 11/2" 10 C	Double Bent (short; R=65 mm)

78114

KAMAZ



REFERENCE NO

79364

CASTING

52894

OEM NO

78115

KAMAZ



REFERENCE NO

79365

CASTING

52895

OEM NO

SIDE	AXLE	MODEL
LEFT		

SIDE	AXLE	MODEL
RIGHT		

No. of Spline Teeth	L1	L2	L3	L4	L5	L6	L7	BUSHING (mm)	OFFSET	INCLINATION (deg)	SPLINE TYPE	CONTROL ARM
10	150							12,70	47,6	+22.5	SAE 11/2" 10 C	Double Bent (short; R=65 mm)
10	150							12,70	-47,6	+22.5	SAE 11/2" 10 C	Double Bent (short; R=65 mm)

AUTOMATIC BRAKE ADJUSTER

69552

SAF



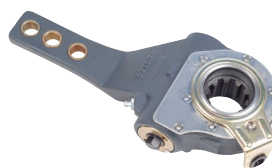
REFERENCE NO
70802

CASTING
52760

OEM NO
21222873
4175020900

69553

SAF



REFERENCE NO
70803

CASTING
52761

OEM NO
21222874
4175020800

SIDE	AXLE	MODEL
LEFT		TRAILER

SIDE	AXLE	MODEL
RIGHT		TRAILER

No. of Spline Teeth	L1	L2	L3	L4	L5	L6	L7	BUSHING (mm)	OFFSET	INCLINATION (deg)	SPLINE TYPE	CONTROL ARM
10	203	179	151					14	-38	0	SAE 11/2" 10 C	Bent
10	203	179	151					14	38	0	SAE 11/2" 10 C	Bent

71577

SAF



REFERENCE NO
72827

CASTING
53226

OEM NO
4175023000

SIDE	AXLE	MODEL
LEFT&RIGHT		TRAILER

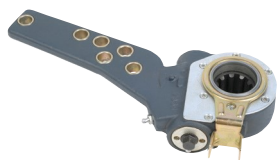
No. of Spline Teeth	L1	L2	L3	L4	L5	L6	L7	BUSHING (mm)	OFFSET	INCLINATION (deg)	SPLINE TYPE	CONTROL ARM
10	178	152	127					14 (L1:w/o)	0	-38	SAE 11/2" 10 C	Double Bent (medium; R=78 mm)

78772

REFERENCE NO
80022

CASTING
55027

OEM NO
4731840



SIDE	AXLE	MODEL
LEFT&RIGHT		TRAILER

No. of Spline Teeth	L1	L2	L3	L4	L5	L6	L7	BUSHING (mm)	OFFSET	INCLINATION (deg)	SPLINE TYPE	CONTROL ARM
10	250	180	155	140	125	105		14	0	20	SAE 11/2" 10 C	Saddle Type

AUTOMATIC BRAKE ADJUSTER

71629

BPW



REFERENCE NO
72879

CASTING
53863

OEM NO
4731476 12137

SIDE	AXLE	MODEL
LEFT		TRAILER

No. of Spline Teeth	L1	L2	L3	L4	L5	L6	L7	BUSHING (mm)	OFFSET
10	178	152	127					14	-25
10	178	152	127					14	25

71630

BPW



REFERENCE NO
72880

CASTING
53864

OEM NO
4731477 12138

SIDE	AXLE	MODEL
RIGHT		TRAILER

INCLINATION (deg)	SPLINE TYPE	CONTROL ARM
-30	SAE 11/2" 10 C	Bent
-30	SAE 11/2" 10 C	Bent

71631

BPW



REFERENCE NO
72881

CASTING
53863

OEM NO
12192

SIDE	AXLE	MODEL
LEFT		TRAILER

No. of Spline Teeth	L1	L2	L3	L4	L5	L6	L7	BUSHING (mm)	OFFSET
10	165	135						14	-25
10	165	135						14	25

71632

BPW



REFERENCE NO
72882

CASTING
53864

OEM NO
12193

SIDE	AXLE	MODEL
RIGHT		TRAILER

INCLINATION (deg)	SPLINE TYPE	CONTROL ARM
-30	SAE 11/2" 10 C	Bent
-30	SAE 11/2" 10 C	Bent

71697

BPW



REFERENCE NO
72947

CASTING
53226

OEM NO
14585 14586 246392

SIDE	AXLE	MODEL
LEFT&RIGHT		TRAILER

No. of Spline Teeth	L1	L2	L3	L4	L5	L6	L7	BUSHING (mm)	OFFSET
10	180							16	0

INCLINATION (deg)	SPLINE TYPE	CONTROL ARM
-38	SAE 11/2" 10 C	Double Bent (long; R=100 mm)

78769

BPW

**REFERENCE NO**
80019**CASTING**
55027**OEM NO**
0557482873 14503
517482392

SIDE	AXLE	MODEL
LEFT&RIGHT		TRAILER

No. of Spline Teeth	L1	L2	L3	L4	L5	L6	L7	BUSHING (mm)	OFFSET	INCLINATION (deg)	SPLINE TYPE	CONTROL ARM
26	250	180	165	150	135	120		14	0	20	SAE 11/2" 10 C	Saddle Type

AUTOMATIC BRAKE ADJUSTER

70854

FRUEHAUF



REFERENCE NO

72104

CASTING

54086

OEM NO

SIDE	AXLE	MODEL
LEFT&RIGHT		TRAILER

No. of Spline Teeth	L1	L2	L3	L4	L5	L6	L7	BUSHING (mm)	OFFSET	INCLINATION (deg)	SPLINE TYPE	CONTROL ARM
37	210	153	129	105				14	0	20	SAE J 498	Bent

71016

FRUEHAUF



REFERENCE NO

72266

CASTING

54086

OEM NO

SIDE	AXLE	MODEL
LEFT&RIGHT		TRAILER

No. of Spline Teeth	L1	L2	L3	L4	L5	L6	L7	BUSHING (mm)	OFFSET	INCLINATION (deg)	SPLINE TYPE	CONTROL ARM
37	215	153	129	105				14 (L1:16)	0	20	SAE J 498	Bent

71018

FRUEHAUF



REFERENCE NO

72268

CASTING

54086

OEM NO

537146

SIDE	AXLE	MODEL
LEFT&RIGHT		TRAILER

No. of Spline Teeth	L1	L2	L3	L4	L5	L6	L7	BUSHING (mm)	OFFSET	INCLINATION (deg)	SPLINE TYPE	CONTROL ARM
10	215	181	153	129	105			12,70	0	20	SAE 11/2" 10 C	Bent

71319

FRUEHAUF



REFERENCE NO
72569

CASTING
54086

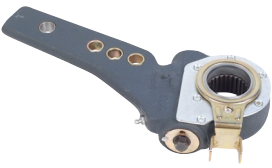
OEM NO
BFSA018 CF351972

SIDE	AXLE	MODEL
LEFT&RIGHT		TRAILER

No. of Spline Teeth	L1	L2	L3	L4	L5	L6	L7	BUSHING (mm)	OFFSET	INCLINATION (deg)	SPLINE TYPE	CONTROL ARM
10	118							14	0	20	SAE 1 1/2" 10 C	Bent

7772

FRUEHAUF



REFERENCE NO
79022

CASTING
54086

OEM NO
06310030
105002001 12630
1387718

SIDE	AXLE	MODEL
LEFT&RIGHT		TRAILER

No. of Spline Teeth	L1	L2	L3	L4	L5	L6	L7	BUSHING (mm)	OFFSET	INCLINATION (deg)	SPLINE TYPE	CONTROL ARM
37	215	153	129	105				14 (L1:16)	0	20	SAE J 498	Saddle Type F

78771

FRUEHAUF



REFERENCE NO
80021

CASTING
55027

OEM NO
KB1020D

SIDE	AXLE	MODEL
LEFT&RIGHT		TRAILER

No. of Spline Teeth	L1	L2	L3	L4	L5	L6	L7	BUSHING (mm)	OFFSET	INCLINATION (deg)	SPLINE TYPE	CONTROL ARM
37	215	153	129	105				14 (L1:16)	0	20	SAE J 498	Saddle Type

AUTOMATIC BRAKE ADJUSTER

78782

FRUEHAUF



REFERENCE NO

80032

CASTING

55027

OEM NO

SIDE	AXLE	MODEL
LEFT&RIGHT		TRAILER

No. of Spline Teeth	L1	L2	L3	L4	L5	L6	L7	BUSHING (mm)	OFFSET	INCLINATION (deg)	SPLINE TYPE	CONTROL ARM
10	150	125						12,70	0	20	SAE 1 1/2" 10 C	Saddle Type

78787

FRUEHAUF



REFERENCE NO

80037

CASTING

55027

OEM NO

SIDE	AXLE	MODEL
LEFT&RIGHT		TRAILER

No. of Spline Teeth	L1	L2	L3	L4	L5	L6	L7	BUSHING (mm)	OFFSET	INCLINATION (deg)	SPLINE TYPE	CONTROL ARM
37	150	125						12,70	0	20	SAE J 498	Saddle Type

70767

KÄSSBOHRER



REFERENCE NO
72017

CASTING
52985

OEM NO
82830005900

SIDE	AXLE	MODEL
LEFT	2	COACH

No. of Spline Teeth	L1	L2	L3	L4	L5	L6	L7	BUSHING (mm)	OFFSET
19	160							14	-38
19	160							14	38

70768

KÄSSBOHRER



REFERENCE NO
72018

CASTING
52987

OEM NO
82830005890

SIDE	AXLE	MODEL
RIGHT	2	COACH

INCLINATION (deg)	SPLINE TYPE	CONTROL ARM
-34	A38x34 DIN 5482	Bent
-34	A38x34 DIN 5482	Bent

71124

KÄSSBOHRER



REFERENCE NO
72374

CASTING
52753

OEM NO
82850000810

SIDE	AXLE	MODEL
LEFT	2	COACH

No. of Spline Teeth	L1	L2	L3	L4	L5	L6	L7	BUSHING (mm)	OFFSET
10	175							16	-22
10	175							16	22

71125

KÄSSBOHRER



REFERENCE NO
72375

CASTING
52754

OEM NO
82850000800

SIDE	AXLE	MODEL
RIGHT	2	COACH

INCLINATION (deg)	SPLINE TYPE	CONTROL ARM
0	SAE 11/2" 10 C	Bent
0	SAE 11/2" 10 C	Bent

77790

KÄSSBOHRER



REFERENCE NO
79040

CASTING
52760

OEM NO
82850000900
82850005380

SIDE	AXLE	MODEL
LEFT	2	COACH S215

No. of Spline Teeth	L1	L2	L3	L4	L5	L6	L7	BUSHING (mm)	OFFSET
19	175							14	-38
19	175							14	38

77791

KÄSSBOHRER



REFERENCE NO
79041

CASTING
52761

OEM NO
82850000890
82850005390

SIDE	AXLE	MODEL
RIGHT	2	COACH S215

INCLINATION (deg)	SPLINE TYPE	CONTROL ARM
0	A38x34 DIN 5482	Bent
0	A38x34 DIN 5482	Bent

71538

ROR



REFERENCE NO
72788

CASTING
54097

OEM NO
105017011

SIDE	AXLE	MODEL
LEFT&RIGHT		TRAILER

No. of Spline Teeth	L1	L2	L3	L4	L5	L6	L7	BUSHING (mm)	OFFSET	INCLINATION (deg)	SPLINE TYPE	CONTROL ARM
10	205	153	140	127	115			14	0	20	SAE 1 1/2" 10 C	Saddle Type

77801

ROR



REFERENCE NO
79051

CASTING
54086

OEM NO
21226978

SIDE	AXLE	MODEL
LEFT&RIGHT		TRAILER

No. of Spline Teeth	L1	L2	L3	L4	L5	L6	L7	BUSHING (mm)	OFFSET	INCLINATION (deg)	SPLINE TYPE	CONTROL ARM
10	215	181	153	129	105			14	0	20	SAE 1 1/2" 10 C	Double Bent (short; R=65 mm)

77847

ROR



REFERENCE NO
79097

CASTING
52755

OEM NO
21225221 21229280

SIDE	AXLE	MODEL
LEFT		TRAILER

No. of Spline Teeth	L1	L2	L3	L4	L5	L6	L7	BUSHING (mm)	OFFSET	INCLINATION (deg)	SPLINE TYPE	CONTROL ARM
10	180	150	125					14	-16	0	SAE 1 1/2" 10 C	Double Bent (short; R=65 mm)
10	180	150	125					14	16	0	SAE 1 1/2" 10 C	Double Bent (short; R=65 mm)

77848

ROR



REFERENCE NO
79098

CASTING
52756

OEM NO
21225220 21229281

SIDE	AXLE	MODEL
RIGHT		TRAILER

AUTOMATIC BRAKE ADJUSTER

77933

ROR



REFERENCE NO
79183

CASTING
54097

OEM NO
009197

SIDE	AXLE	MODEL
LEFT&RIGHT		TRAILER

No. of Spline Teeth	L1	L2	L3	L4	L5	L6	L7	BUSHING (mm)	OFFSET	INCLINATION (deg)	SPLINE TYPE	CONTROL ARM
10	127	140	153					14	0	20	SAE 11/2" 28 C	BENT

71667

ROR



REFERENCE NO
72917

CASTING
52760

OEM NO
21222924

SIDE	AXLE	MODEL
LEFT		TRAILER

No. of Spline Teeth	L1	L2	L3	L4	L5	L6	L7	BUSHING (mm)	OFFSET	INCLINATION (deg)	SPLINE TYPE	CONTROL ARM
10	140							14	-38	0	SAE 11/2" 10 C	Bent
10	140							14	38	0	SAE 11/2" 10 C	Bent

71668

ROR



REFERENCE NO
72918

CASTING
52761

OEM NO
21222925

SIDE	AXLE	MODEL
RIGHT		TRAILER

78770

ROR



REFERENCE NO
80020

CASTING
55027

OEM NO
14511 14513 4731857

SIDE	AXLE	MODEL
LEFT&RIGHT		TRAILER

No. of Spline Teeth	L1	L2	L3	L4	L5	L6	L7	BUSHING (mm)	OFFSET	INCLINATION (deg)	SPLINE TYPE	CONTROL ARM
10	205	153	140	127	115			14	0	20	SAE 11/2" 10 C	Saddle Type

All manufacturer names, trademarks, product descriptions contained in this product catalog are for reference only. All reference numbers are for comparison purposes.

AUTOMATIC BRAKE ADJUSTER

71333

TEMSA



REFERENCE NO
72583

CASTING
52901

OEM NO
TC807634

SIDE	AXLE	MODEL
RIGHT		

No. of Spline Teeth	L1	L2	L3	L4	L5	L6	L7	BUSHING (mm)	OFFSET	INCLINATION (deg)	SPLINE TYPE	CONTROL ARM
25	145							14	60,3	+22.5	JIS B 1602	Double Bent (medium; R=78 mm)
25	145							14	-60,3	+22.5	JIS B 1602	Double Bent (medium; R=78 mm)

71334

TEMSA



REFERENCE NO
72584

CASTING
52902

OEM NO
TC807635

SIDE	AXLE	MODEL
LEFT		

71335

TEMSA



REFERENCE NO
72585

CASTING
53226

OEM NO
TC807632

SIDE	AXLE	MODEL
LEFT&RIGHT		

No. of Spline Teeth	L1	L2	L3	L4	L5	L6	L7	BUSHING (mm)	OFFSET	INCLINATION (deg)	SPLINE TYPE	CONTROL ARM
25	135							14	0	-38	JIS B 1602	Double Bent (medium; R=78 mm)

71522

HYUNDAI



REFERENCE NO
72772

CASTING
54004

OEM NO

SIDE	AXLE	MODEL
RIGHT		

No. of Spline Teeth	L1	L2	L3	L4	L5	L6	L7	BUSHING (mm)	OFFSET	INCLINATION (deg)	SPLINE TYPE	CONTROL ARM
10	145							14	60	34,5	SAE 1 1/2" 10 C	Double Bent (Short; R=65 mm)
10	145							14	-60	34,5	SAE 1 1/2" 10 C	Double Bent (Short; R=65 mm)

71523

HYUNDAI



REFERENCE NO
72773

CASTING
54005

OEM NO

SIDE	AXLE	MODEL
LEFT		

71527

HYUNDAI



REFERENCE NO
72777

CASTING
53226

OEM NO

SIDE	AXLE	MODEL
LEFT&RIGHT		

No. of Spline Teeth	L1	L2	L3	L4	L5	L6	L7	BUSHING (mm)	OFFSET	INCLINATION (deg)	SPLINE TYPE	CONTROL ARM
10	135							16	0	-38	SAE 1 1/2" 10 C	Double Bent (Short; R=65 mm)

71528

HYUNDAI



REFERENCE NO
72778

CASTING
53226

OEM NO

SIDE	AXLE	MODEL
LEFT&RIGHT		

No. of Spline Teeth	L1	L2	L3	L4	L5	L6	L7	BUSHING (mm)	OFFSET	INCLINATION (deg)	SPLINE TYPE	CONTROL ARM
10	145							16	0	-38	SAE 1 1/2" 10 C	Double Bent (Short; R=65 mm)

9101W

SETRA



REFERENCE NO

CASTING

OEM NO
4335435170

SIDE	AXLE	MODEL
LEFT		

No. of Spline Teeth	L1	L2	L3	L4	L5	L6	L7	BUSHING (mm)	OFFSET	INCLINATION (deg)	SPLINE TYPE	CONTROL ARM
19	175							14				
19	175							14				

9102W

SETRA



REFERENCE NO

CASTING

OEM NO
4335435180

SIDE	AXLE	MODEL
RIGHT		

AUTOMATIC BRAKE ADJUSTER

77934

FODEN



REFERENCE NO
79184

CASTING
53226

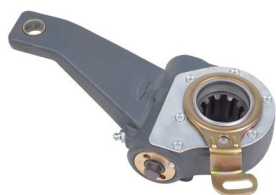
OEM NO
2700052000
2700054

SIDE	AXLE	MODEL
LEFT&RIGHT LEFT&RIGHT LEFT&RIGHT	2, 3, 4	3000 Series, 4000 Series, ALPHA

No. of Spline Teeth	L1	L2	L3	L4	L5	L6	L7	BUSHING (mm)	OFFSET	INCLINATION (deg)	SPLINE TYPE	CONTROL ARM
28	127							12,7	0	-38	SAE 11/2" 28 C	Double Bent (Medium; R=78 mm)

78099

FODEN



REFERENCE NO
79349

CASTING
53704

OEM NO

SIDE	AXLE	MODEL
LEFT		

No. of Spline Teeth	L1	L2	L3	L4	L5	L6	L7	BUSHING (mm)	OFFSET	INCLINATION (deg)	SPLINE TYPE	CONTROL ARM
10	165							14	-50	0	SAE 11/2" 10 C	Double Bent (short; R=65 mm)
10	165							14	50	0	SAE 11/2" 10 C	Double Bent (short; R=65 mm)

78100

FODEN



REFERENCE NO
79350

CASTING
53705

OEM NO

SIDE	AXLE	MODEL
RIGHT		

77898

SAE



REFERENCE NO
79148

CASTING
54097

OEM NO
9002281

SIDE	AXLE	MODEL
LEFT&RIGHT		TRAILER

No. of Spline Teeth	L1	L2	L3	L4	L5	L6	L7	BUSHING (mm)	OFFSET	INCLINATION (deg)	SPLINE TYPE	CONTROL ARM
10	178	153	127					14	0	20	SAE 11/2" 10 C	Double Bent (short; R=65 mm)

77899

SAE



REFERENCE NO
79149

CASTING
54076

OEM NO
9002113

SIDE	AXLE							MODEL
LEFT&RIGHT								TRAILER

No. of Spline Teeth	L1	L2	L3	L4	L5	L6	L7	BUSHING (mm)	OFFSET	INCLINATION (deg)	SPLINE TYPE	CONTROL ARM
10	250	180	155	140	125	105		14	0	20	SAE 1 1/2" 10 C	Saddle Type

71679

ZF/Neoplan



REFERENCE NO
72929

CASTING
54040

OEM NO
1137064 3231343
42531790

SIDE	AXLE							MODEL
LEFT								TRAILER

No. of Spline Teeth	L1	L2	L3	L4	L5	L6	L7	BUSHING (mm)	OFFSET	INCLINATION (deg)	SPLINE TYPE	CONTROL ARM
19	152							14	50	22	A38x34 DIN 5482	Double Bent (short; R=65 mm)
19	152							14	-28,5	0	A38x34 DIN 5482	Double Bent (short; R=65 mm)

71680

ZF/Neoplan



REFERENCE NO
72930

CASTING
53068

OEM NO
1137065 3231273
42531791

SIDE	AXLE							MODEL
RIGHT								TRAILER

70953

ZF/Neoplan



REFERENCE NO
72203

CASTING
53863

OEM NO
0501309398
11013281 4731246

SIDE	AXLE							MODEL
LEFT	1							STARLINER

No. of Spline Teeth	L1	L2	L3	L4	L5	L6	L7	BUSHING (mm)	OFFSET	INCLINATION (deg)	SPLINE TYPE	CONTROL ARM
19	145							14	-25	-30	A38x34 DIN 5482	Double Bent (short; R=65 mm)
19	145							14	25	-30	A38x34 DIN 5482	Double Bent (short; R=65 mm)

70954

ZF/Neoplan



REFERENCE NO
72204

CASTING
53864

OEM NO
0501309399
4731253

SIDE	AXLE							MODEL
RIGHT	1							STARLINER

AUTOMATIC BRAKE ADJUSTER

78774

TRAILER



REFERENCE NO
80024

CASTING
55027

OEM NO
14545 KB1015D

SIDE	AXLE	MODEL
LEFT&RIGHT		TRAILER

No. of Spline Teeth	L1	L2	L3	L4	L5	L6	L7	BUSHING (mm)	OFFSET	INCLINATION (deg)	SPLINE TYPE	CONTROL ARM
10	210	180	150	125				14	0	20	SAE 11/2" 10 C	Saddle Type

71209

VAN HOOL



REFERENCE NO
72459

CASTING
52753

OEM NO
135027/2 633104610

SIDE	AXLE	MODEL
LEFT	2	BUS

No. of Spline Teeth	L1	L2	L3	L4	L5	L6	L7	BUSHING (mm)	OFFSET	INCLINATION (deg)	SPLINE TYPE	CONTROL ARM
19	160							14	-22	0	A38x34 DIN 5482	Double Bent (short; R=65 mm)
19	160							14	22	0	A38x34 DIN 5482	Double Bent (short; R=65 mm)

71210

VAN HOOL



REFERENCE NO
72460

CASTING
52754

OEM NO
164290/2 633104620

SIDE	AXLE	MODEL
RIGHT	2	BUS

78249

TATRA



REFERENCE NO
79499

CASTING
54042

OEM NO

SIDE	AXLE	MODEL
RIGHT		

No. of Spline Teeth	L1	L2	L3	L4	L5	L6	L7	BUSHING (mm)	OFFSET	INCLINATION (deg)	SPLINE TYPE	CONTROL ARM
26	175							14	-45	-30	40x1.5 CSN 014950.1	Bent
26	175							14	45	-30	40x1.5 CSN 014950.1	Bent

78250

TATRA



REFERENCE NO
79500

CASTING
54043

OEM NO

SIDE	AXLE	MODEL
LEFT		

78773

SMB



REFERENCE NO
80023

CASTING
55027

OEM NO
14507 KB1025D

SIDE	AXLE	MODEL
LEFT&RIGHT		TRAILER

No. of Spline Teeth	L1	L2	L3	L4	L5	L6	L7	BUSHING (mm)	OFFSET	INCLINATION (deg)	SPLINE TYPE	CONTROL ARM
10	215	153	129	105				14 (L1:16)	0	20	SAE 11/2" 10 C	Saddle Type

71112

AMERICAN GROUP



REFERENCE NO

CASTING

OEM NO
J0121PN0997
K041771
K046808

SIDE	AXLE	MODEL
FRONT & REAR		TRAILER - TRUCK - TRACTOR - STEERING AXLE

No. of Spline Teeth	L1	L2	L3	L4	L5	L6	L7	BUSHING (mm)	OFFSET	INCLINATION (deg)	SPLINE TYPE	CONTROL ARM
28	139,7							12,7	0	0	SAE 11/2" 28 C	

71113

AMERICAN GROUP



REFERENCE NO

CASTING

OEM NO
G0721PN0896
K041871
AS1136
AS1036

SIDE	AXLE	MODEL
FRONT & REAR		TRAILER - TRUCK - TRACTOR - LIFT AXLE

No. of Spline Teeth	L1	L2	L3	L4	L5	L6	L7	BUSHING (mm)	OFFSET	INCLINATION (deg)	SPLINE TYPE	CONTROL ARM
10	139,7							12,7	0	0	SAE 11/4" 10 C	

AUTOMATIC BRAKE ADJUSTER

71114

AMERICAN GROUP



REFERENCE NO

CASTING

OEM NO
2732111472 K041871
AS1132

SIDE	AXLE	MODEL
FRONT & REAR		TRAILER - TRUCK - TRACTOR

No. of Spline Teeth	L1	L2	L3	L4	L5	L6	L7	BUSHING (mm)	OFFSET	INCLINATION (deg)	SPLINE TYPE	CONTROL ARM
10	139,7							12,7	0	0	SAE 11/2" 10 C	

90060021

AMERICAN GROUP



REFERENCE NO

40020211

CASTING

A216

OEM NO

40926002

SIDE	AXLE	MODEL
		TRAILER

No. of Spline Teeth	L1	L2	L3	L4	L5	L6	L7	BUSHING (mm)	OFFSET	INCLINATION (deg)	SPLINE TYPE	CONTROL ARM
28	139,7							12,7	0	0	SAE 11/2" 28 C	

71117

AMERICAN GROUP



REFERENCE NO

40020228

CASTING

A141

OEM NO

40926017

SIDE	AXLE	MODEL
		TRAILER- LIFT AXLE

No. of Spline Teeth	L1	L2	L3	L4	L5	L6	L7	BUSHING (mm)	OFFSET	INCLINATION (deg)	SPLINE TYPE	CONTROL ARM
10	139,7							12,7	0	34	SAE 11/2" 10 C	

71143

AMERICAN GROUP



REFERENCE NO

40010013

CASTING

A216

OEM NO

40910172

SIDE	AXLE	MODEL
REAR		TRUCK - LIFT AXLE

No. of Spline Teeth	L1	L2	L3	L4	L5	L6	L7	BUSHING (mm)	OFFSET	INCLINATION (deg)	SPLINE TYPE	CONTROL ARM
10	139,7							12,7	0	0	SAE 11/4" 10 C	

900700155

AMERICAN GROUP



REFERENCE NO

40010155

CASTING

A216

OEM NO

40910635

SIDE	AXLE	MODEL
REAR		TRAILER - TRUCK - TRACTOR

No. of Spline Teeth	L1	L2	L3	L4	L5	L6	L7	BUSHING (mm)	OFFSET	INCLINATION (deg)	SPLINE TYPE	CONTROL ARM
10	139,7							16	0	0	SAE 11/2" 10 C	

78101

AMERICAN GROUP



REFERENCE NO

79351 - 79352

CASTING

54040

OEM NO

79351 79352

SIDE	AXLE	MODEL
		ISUZU TRAILER

No. of Spline Teeth	L1	L2	L3	L4	L5	L6	L7	BUSHING (mm)	OFFSET	INCLINATION (deg)	SPLINE TYPE	CONTROL ARM
14	165	135						12	50	22		Bent (R=65 mm)

MANUAL BRAKE ADJUSTER

G1760

BPW



REFERENCE NO
100001760

CASTING

OEM NO
024490 0517465130

SIDE	AXLE	MODEL
LEFT&RIGHT		

No. of Spline Teeth	L1	L2	L3	L4	L5	L6	L7	BUSHING (mm)	OFFSET	INCLINATION (deg)	OVERALL LENGHT	CONTROL ARM
10	120	135	150	165	180	195	250	w/0-14			272	

G1721

BPW



REFERENCE NO
100001721

CASTING

OEM NO
024090 0517452610
4335010290

SIDE	AXLE	MODEL
LEFT&RIGHT		

No. of Spline Teeth	L1	L2	L3	L4	L5	L6	L7	BUSHING (mm)	OFFSET	INCLINATION (deg)	OVERALL LENGHT	CONTROL ARM
10	120	150	180	220	250			w/0-14			272	

G1021

BPW



REFERENCE NO
100001021

CASTING

OEM NO
024089 0517452340
4335010060

SIDE	AXLE	MODEL
LEFT&RIGHT		

No. of Spline Teeth	L1	L2	L3	L4	L5	L6	L7	BUSHING (mm)	OFFSET	INCLINATION (deg)	OVERALL LENGHT	CONTROL ARM
10	120	150	180					w/0-14			218	

MANUAL BRAKE ADJUSTER

G7401L

MERCEDES



REFERENCE NO
104507401

CASTING

OEM NO
0517454700
3464201838
4335065150

SIDE	AXLE	MODEL
LEFT		

No. of Spline Teeth	L1	L2	L3	L4	L5	L6	L7	BUSHING (mm)	OFFSET
26	145							w/O-14	-56
26	145							w/O-14	56

G7401

MERCEDES



REFERENCE NO
104407401

CASTING

OEM NO
0517454690
3464201738
4335065140

SIDE	AXLE	MODEL
RIGHT		

No. of Spline Teeth	L1	L2	L3	L4	L5	L6	L7	BUSHING (mm)	OFFSET	INCLINATION (deg)	SPLINE TYPE	CONTROL ARM
26	145							w/O-14	-56		161	
26	145							w/O-14	56		161	

G750

MERCEDES



REFERENCE NO

CASTING

OEM NO
4665061030
3454207438

SIDE	AXLE	MODEL
LEFT&RIGHT		

No. of Spline Teeth	L1	L2	L3	L4	L5	L6	L7	BUSHING (mm)	OFFSET
26	145							14	0

No. of Spline Teeth	L1	L2	L3	L4	L5	L6	L7	BUSHING (mm)	OFFSET	INCLINATION (deg)	SPLINE TYPE	CONTROL ARM
26	145							14	0			

G850

VOLVO



REFERENCE NO

CASTING

OEM NO

SIDE	AXLE	MODEL
LEFT		

No. of Spline Teeth	L1	L2	L3	L4	L5	L6	L7	BUSHING (mm)	OFFSET
10	140	165						12.7	38
10	140	165						12.7	-38

G851

VOLVO



REFERENCE NO

CASTING

OEM NO

SIDE	AXLE	MODEL
RIGHT		

No. of Spline Teeth	L1	L2	L3	L4	L5	L6	L7	BUSHING (mm)	OFFSET	INCLINATION (deg)	SPLINE TYPE	CONTROL ARM
10	140	165						12.7	38		192	
10	140	165						12.7	-38		192	

MANUAL BRAKE ADJUSTER

G950

SCANIA



REFERENCE NO

CASTING

OEM NO
1448114

SIDE	AXLE	MODEL
LEFT		

No. of Spline Teeth	L1	L2	L3	L4	L5	L6	L7	BUSHING (mm)	OFFSET
10	165							16	25
10	165							16	25

G951

SCANIA



REFERENCE NO

CASTING

OEM NO
1448115

SIDE	AXLE	MODEL
RIGHT		

No. of Spline Teeth	L1	L2	L3	L4	L5	L6	L7	BUSHING (mm)	OFFSET	INCLINATION (deg)	SPLINE TYPE	CONTROL ARM
10	165							16	25			
10	165							16	25			

G960

SCANIA



REFERENCE NO

CASTING

OEM NO
1448113 278734
1865746

SIDE	AXLE	MODEL
LEFT&RIGHT		

No. of Spline Teeth	L1	L2	L3	L4	L5	L6	L7	BUSHING (mm)	OFFSET	INCLINATION (deg)	SPLINE TYPE	CONTROL ARM
10	165							16	0			

G980

SCANIA



REFERENCE NO

CASTING

OEM NO
276517

SIDE	AXLE	MODEL
LEFT		

No. of Spline Teeth	L1	L2	L3	L4	L5	L6	L7	BUSHING (mm)	OFFSET	INCLINATION (deg)	SPLINE TYPE	CONTROL ARM
10	165							16	50.8			
10	165							16	50.8			

G981

SCANIA



REFERENCE NO

CASTING

OEM NO
276518

SIDE	AXLE	MODEL
RIGHT		

No. of Spline Teeth	L1	L2	L3	L4	L5	L6	L7	BUSHING (mm)	OFFSET	INCLINATION (deg)	SPLINE TYPE	CONTROL ARM
10	165							16	50.8			
10	165							16	50.8			

All manufacturer names, trademarks, product descriptions contained in this product catalog are for reference only. All reference numbers are for comparison purposes.

MANUAL BRAKE ADJUSTER

G982

SCANIA



REFERENCE NO

CASTING

OEM NO
1448120

SIDE	AXLE	MODEL
LEFT		

No. of Spline Teeth	L1	L2	L3	L4	L5	L6	L7	BUSHING (mm)	OFFSET	INCLINATION (deg)	SPLINE TYPE	CONTROL ARM
10	165							16	65			
10	165							16	65			

G983

SCANIA



REFERENCE NO

CASTING

OEM NO
1448121

SIDE	AXLE	MODEL
RIGHT		

G1047

ROR



REFERENCE NO

100101047

CASTING

OEM NO
06310070
106101047
2100200012

SIDE	AXLE	MODEL
LEFT&RIGHT		

No. of Spline Teeth	L1	L2	L3	L4	L5	L6	L7	BUSHING (mm)	OFFSET	INCLINATION (deg)	SPLINE TYPE	CONTROL ARM
10	127	152	178	203				w/0-14			218	

G7001

ROR/TRAILOR



REFERENCE NO

CASTING

OEM NO
21219681 CF352196

SIDE	AXLE	MODEL
LEFT&RIGHT		

No. of Spline Teeth	L1	L2	L3	L4	L5	L6	L7	BUSHING (mm)	OFFSET	INCLINATION (deg)	SPLINE TYPE	CONTROL ARM
10	127	152	178	203				14 (E:w/o-16)	0		218	

MANUAL BRAKE ADJUSTER

G4750

FRUEHAUF



REFERENCE NO
100014750

CASTING

OEM NO
106014750

SIDE	AXLE	MODEL
LEFT&RIGHT		

No. of Spline Teeth	L1	L2	L3	L4	L5	L6	L7	BUSHING (mm)	OFFSET	INCLINATION (deg)	SPLINE TYPE	CONTROL ARM
37	105	130	150	180	215			w/O-14 (E:w/o-18)			233	

G1743

SAUER



REFERENCE NO
100101743

CASTING

OEM NO
106101743
2100200703

SIDE	AXLE	MODEL
LEFT&RIGHT		

No. of Spline Teeth	L1	L2	L3	L4	L5	L6	L7	BUSHING (mm)	OFFSET	INCLINATION (deg)	SPLINE TYPE	CONTROL ARM
10	127	152	178	203	230			w/O-14 (E:w/o-18)			272	

G66830

RENAULT



REFERENCE NO

CASTING

OEM NO
5000716830

SIDE	AXLE	MODEL
LEFT		

No. of Spline Teeth	L1	L2	L3	L4	L5	L6	L7	BUSHING (mm)	OFFSET	INCLINATION (deg)	SPLINE TYPE	CONTROL ARM
27												
27												

G66831

RENAULT



REFERENCE NO

CASTING

OEM NO
5000716831

SIDE	AXLE	MODEL
RIGHT		

MANUAL BRAKE ADJUSTER

G994

HOWO



REFERENCE NO

CASTING

OEM NO
WG9100340056

G995

HOWO



REFERENCE NO

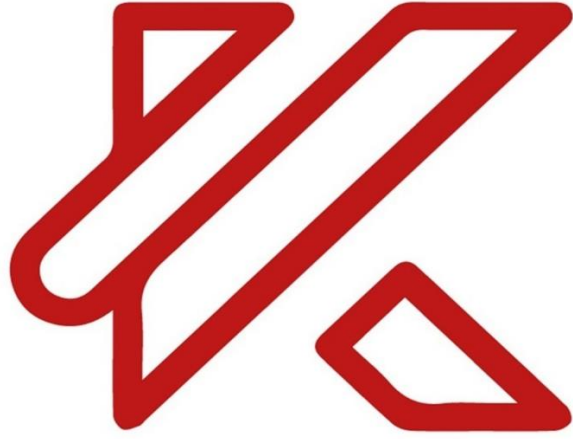
CASTING

OEM NO
WG9100340057

SIDE	AXLE	MODEL
LEFT		

SIDE	AXLE	MODEL
RIGHT		

No. of Spline Teeth	L1	L2	L3	L4	L5	L6	L7	BUSHING (mm)	OFFSET	INCLINATION (deg)	SPLINE TYPE	CONTROL ARM
19	145							w/0--14	56		161	
19	145							w/0--14	-56		161	



KUTLU TRUCK

www.kutlutruck.com

+90 (362) 238 11 60



info@kutlutruck.com



+90 (545) 465 55 53



+90 (546) 465 55 53

İstiklal Mahallesi Atatürk Bulvarı No:155
Tekkeköy / Samsun / Türkiye

